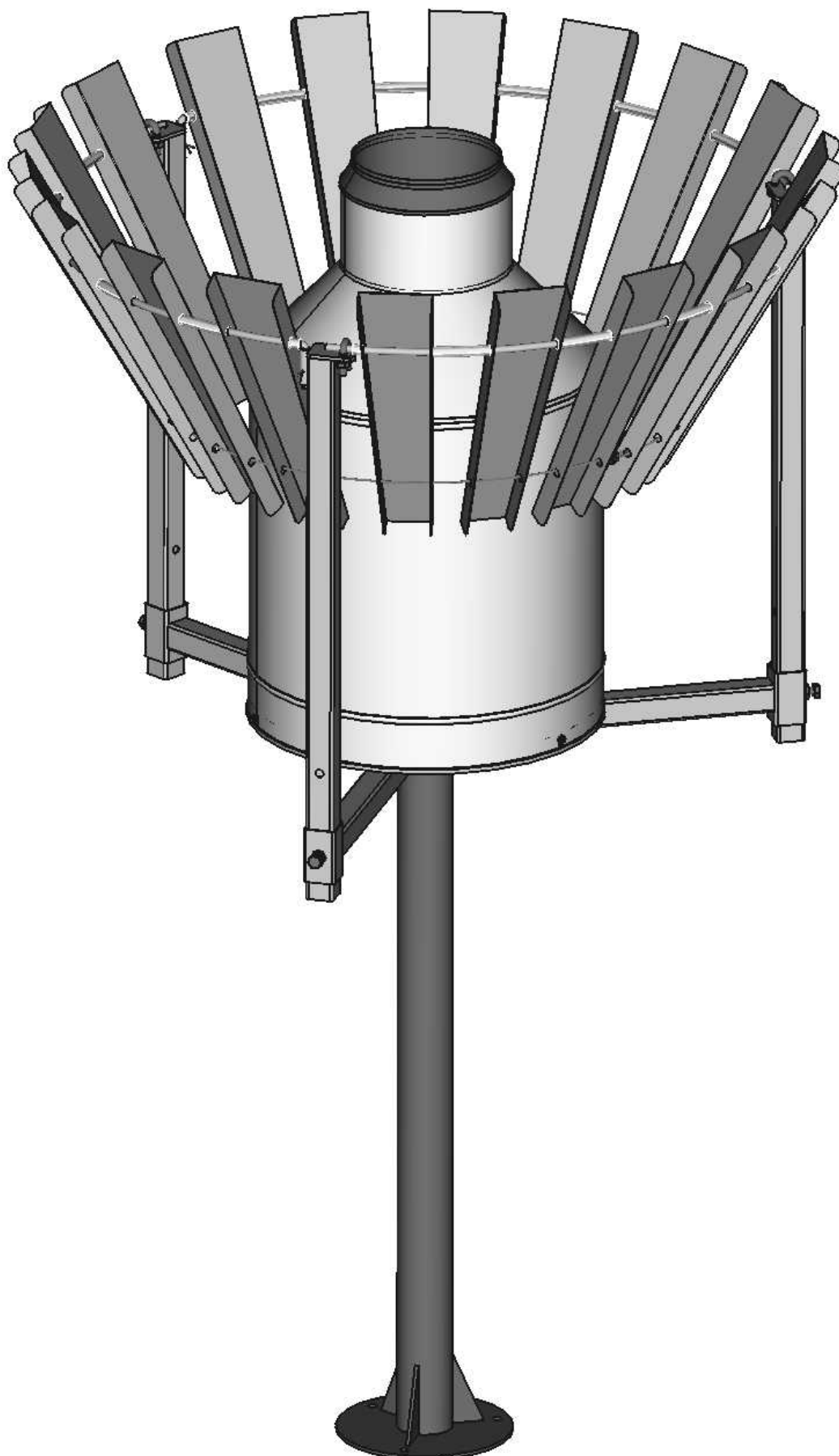


# Instalation guide Tretyakov Wind Shield TRWS\_10 & TRWS\_30

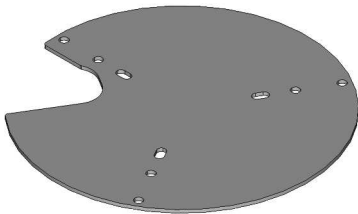


v.2.0  
02.2025

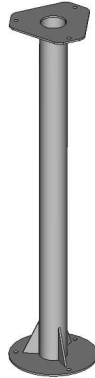
Follow these step-by-step instructions to assemble the TWS for your precipitation measurement system.

**Parts list:**

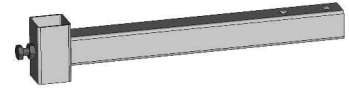
**1. Mounting bracket 1 pc**



**2. TRWS stand 1 pc**  
(not part of the TWS delivery)



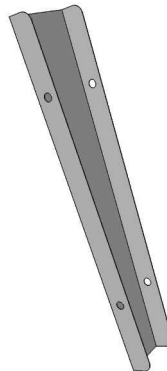
**3. Horizontal arm 3 pcs**



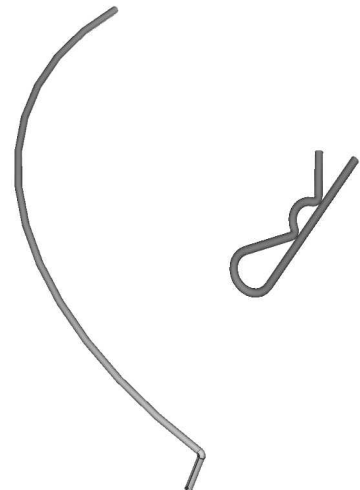
**4. Vertical support 3 pcs**



**5. Leaf 18 pcs**



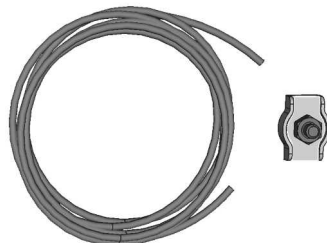
**6. Ring segment 3 pcs**  
**R-Clip 3 pcs**



**7. Spacers**  
– Long 15 pcs  
– Short 6 pcs



**8. Steel cable & clamp 1 pc**



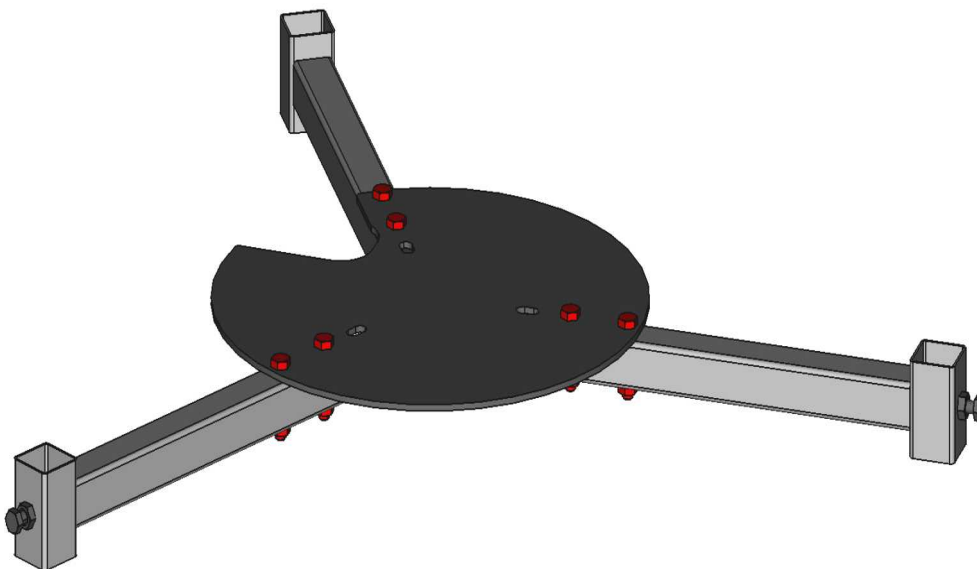
**9. M8x45 bolt with nut & washer 6 pcs**



## Assembly procedure:

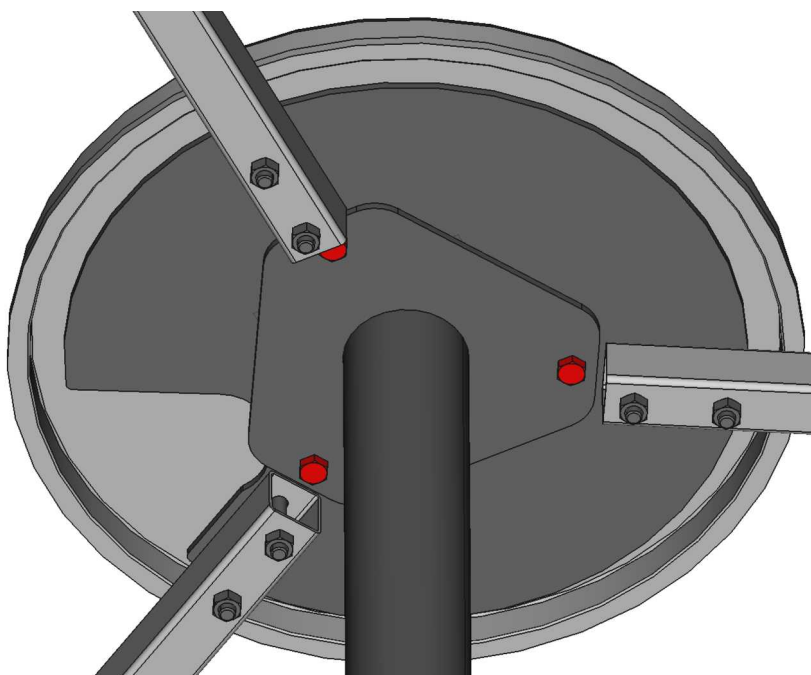
### 1. Attach Horizontal Arms

- Attach **3 pcs Horizontal Arms (3)** to the bottom side of the **Mounting Bracket (1)** using **6 pcs M8x45 bolts with washer & nut (9)** for each arm. Tighten with a 13 mm wrench.



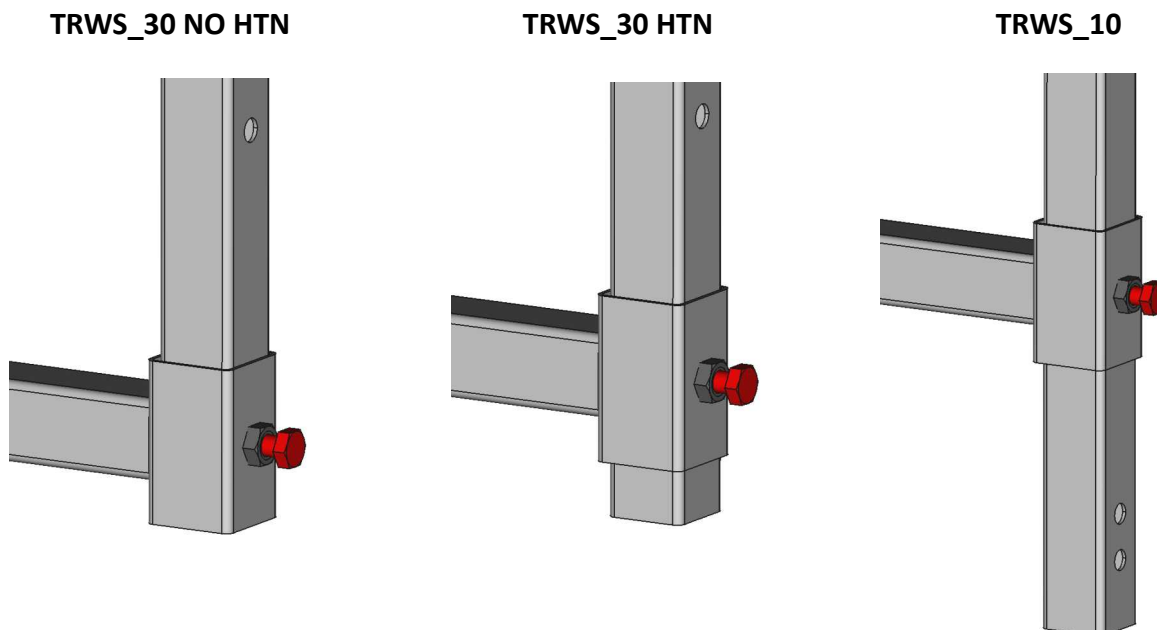
### 2. Fix the Mounting Bracket to the Stand

- Place the **Mounting Bracket (1)** on the upper flange of the **TRWS Stand (2)**. Align the holes in the bracket with the matching holes in the stand flange.
- Position the **TRWS base** on top, ensuring its threaded holes align with the holes in the flange and the Mounting Bracket.
- Secure the base plate using **three M8 bolts**. Tighten with a 13 mm wrench.



### 3. Attach Vertical Supports

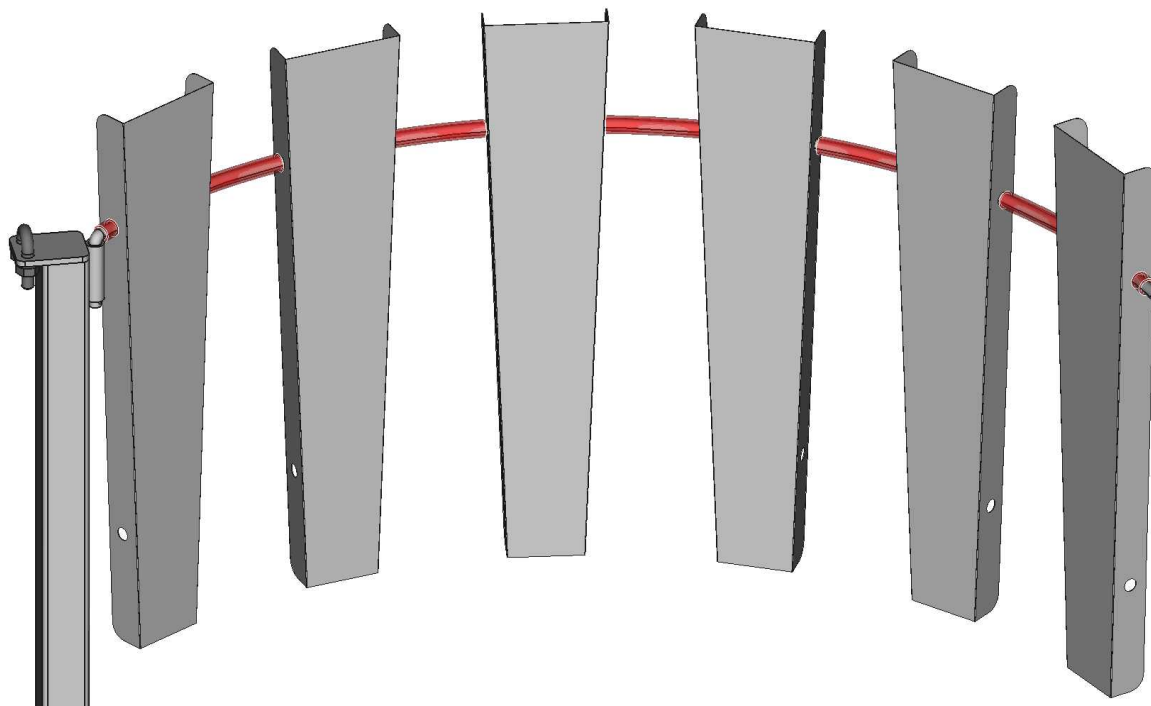
- Attach **3 Vertical Supports** (4) to the ends of the Horizontal Arms (3).
- Use the holes that correspond to your specific TRWS model:



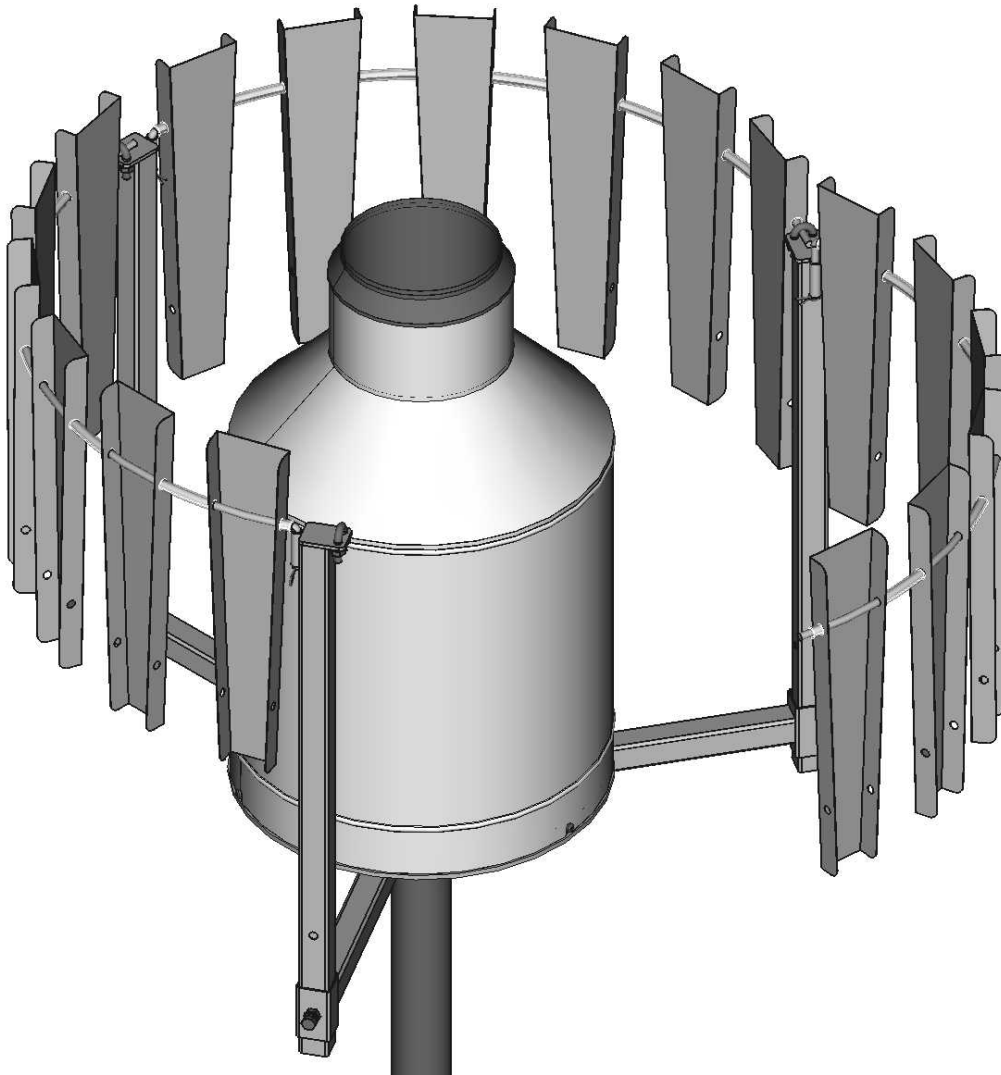
- Tighten with a 13 mm wrench.

### 4. Assemble the Ring Segments with Leaves and Spacers

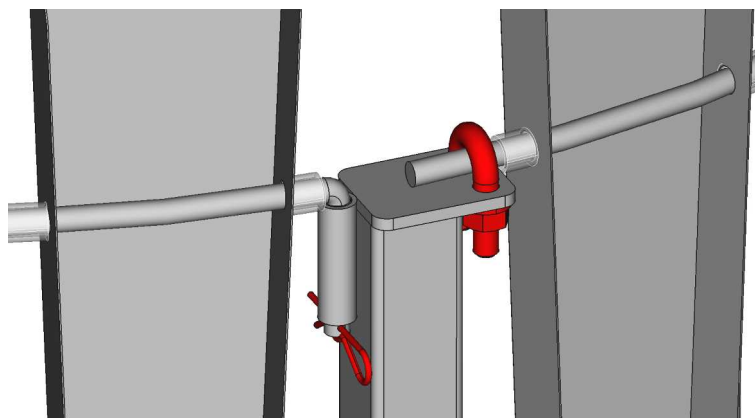
- Insert the **Ring segments** (6) into the hinges on the **Vertical support** (4)
- On each **Ring Segment**, alternately attach **Leaves** (5) and **Spacers** (7). Use the holes at the wider ends of the Leaves for attachment. Between **six leaves**, use **5 pcs of Long spacers** (7), and on both ends use **2 pcs Short spacers** (7) each.
- Ensure the flat sides of the Leaves face inward, towards the rain gauge.



## 5. Securing ring segments

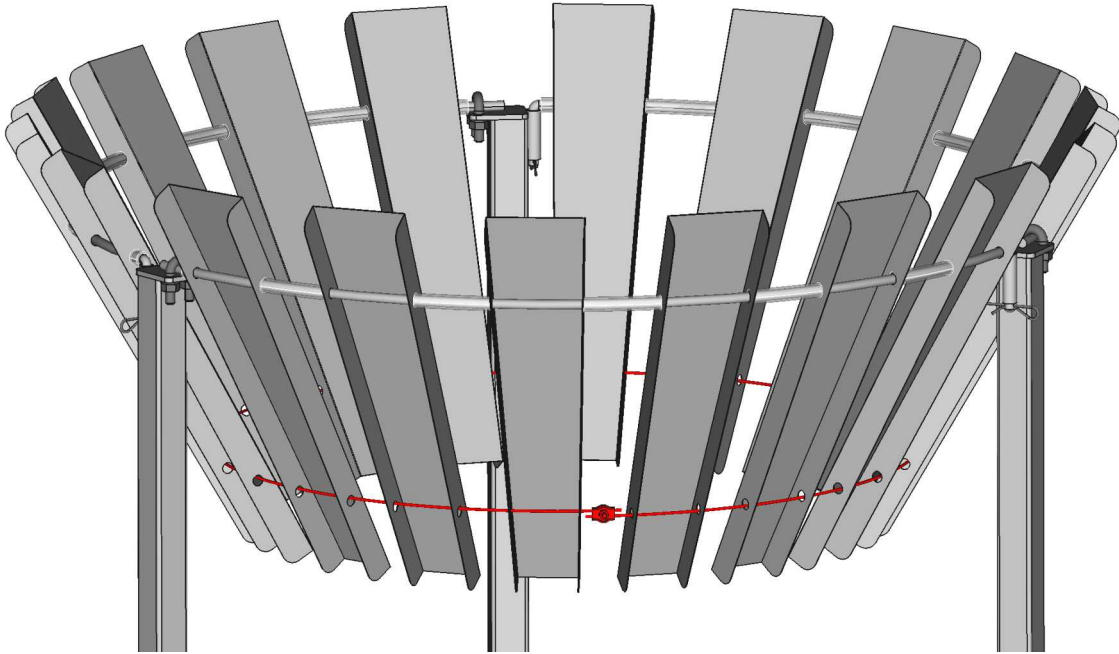


- By rotating the **Ring segment** at the hinge, insert the open end into the **U-clamp** on the other leg
- Tighten with a 13 mm wrench
- Secure with **R-clip** (6)

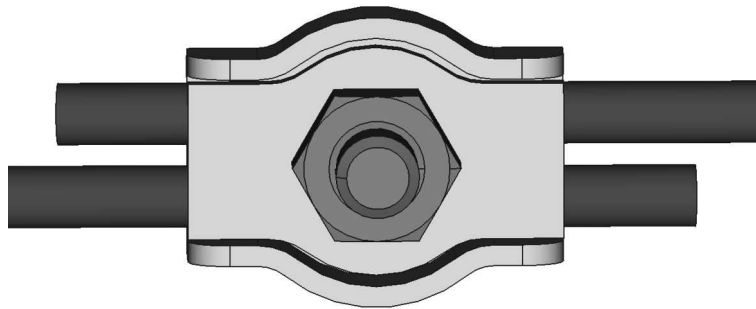


## 6. Install the Steel Cable

- Thread the **Steel Cable** (8) through the holes at the lower ends of each Leaf (5).



- Connect both ends of the cable using the provided clamp. Tighten with a 7 mm socket wrench.



### Final Adjustments:

- Verify that all bolts are tightened and the structure is stable.
- Ensure the Leaves are evenly spaced and properly aligned for optimal wind shielding.
- Make sure the stand is securely fastened and anchored to the ground to prevent the entire assembly from vibrating in the wind.