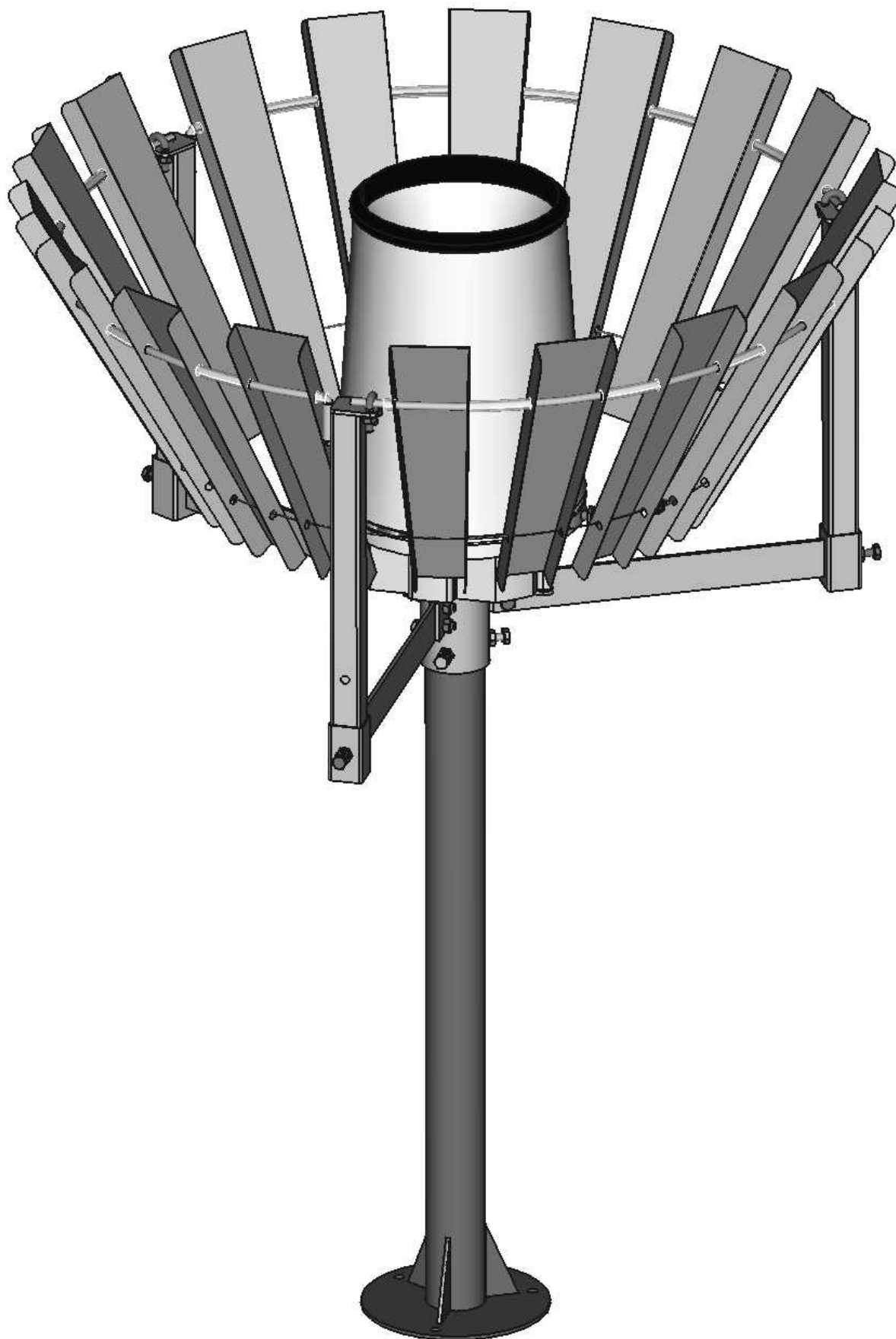


Instalation guide Tretyakov Wind Shield TRWS_E

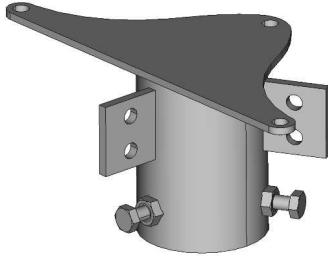


v.2.0
02.2025

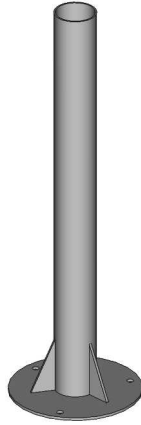
Follow these step-by-step instructions to assemble the TWS for your precipitation measurement system.

Parts list:

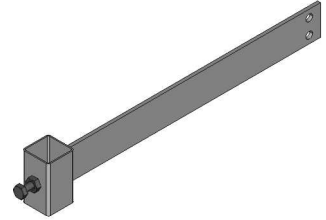
1. Mounting bracket 1 pc



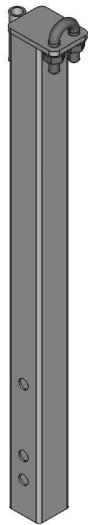
2. TRWS_E stand 1 pc
(not part of the TWS delivery)



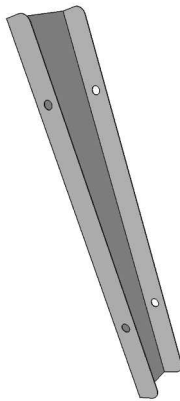
3. Horizontal arm 3 pcs



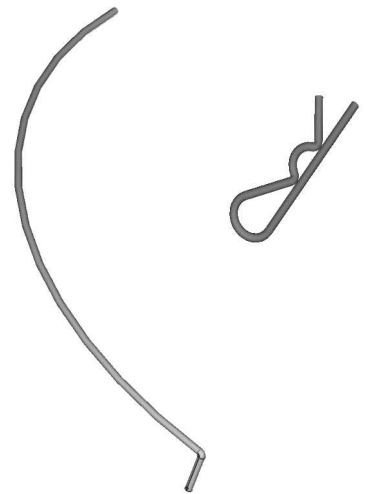
4. Vertical support 3 pcs



5. Leaf 18 pcs



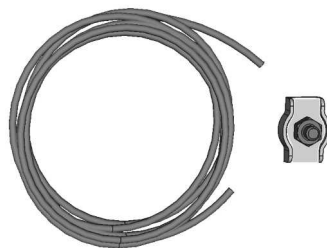
6. Ring segment 3 pcs
R-Clip 3 pcs



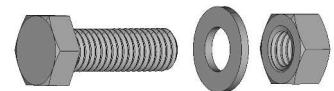
7. Spacers
– Long 15 pcs
– Short 6 pcs



8. Steel cable & clamp 1 pc



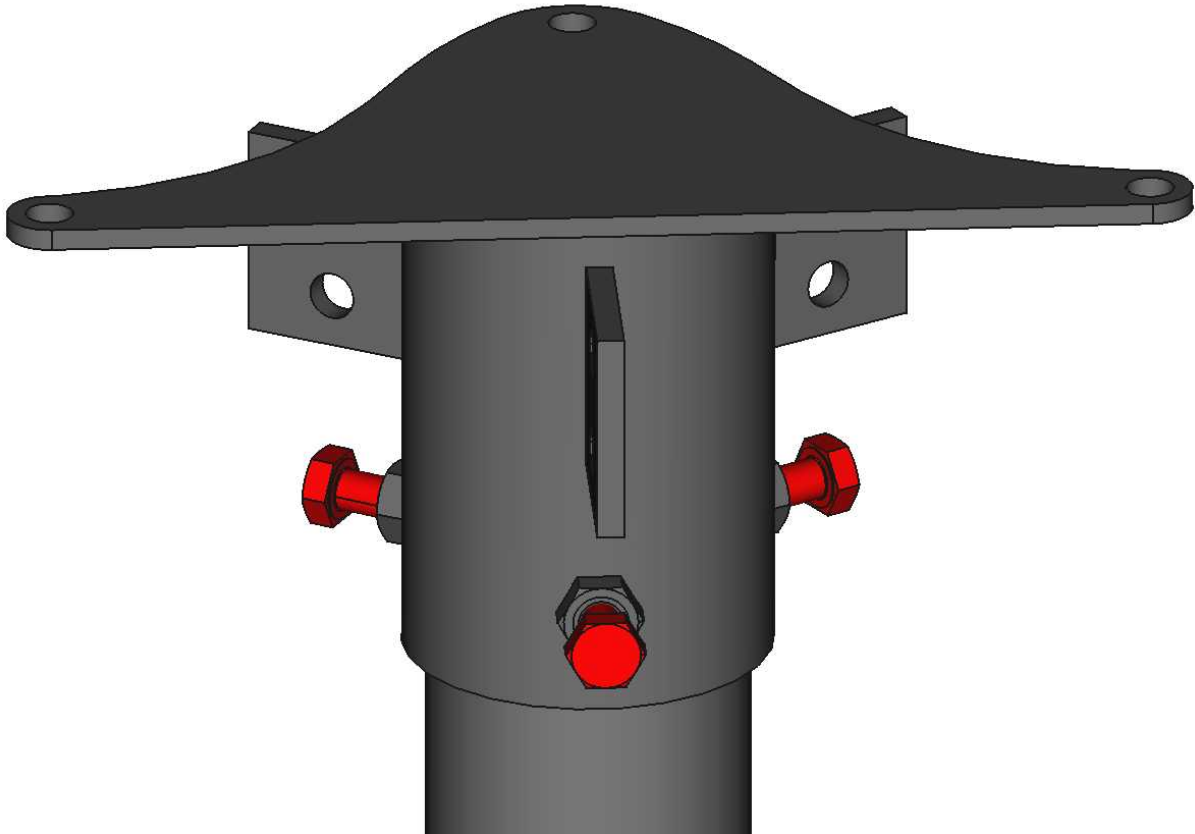
**9. M8x20 bolt with
nut & washer 6 pcs**



Assembly procedure:

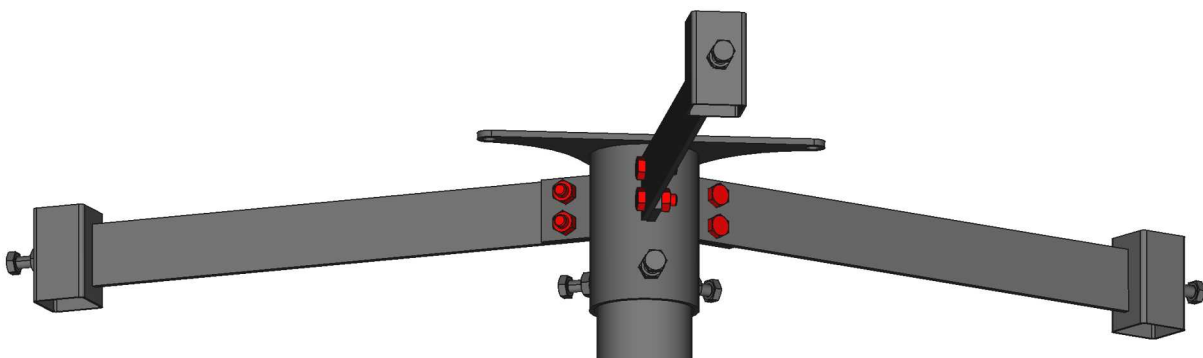
1. Fix the Mounting Bracket to the Stand

- Place the **Mounting Bracket (1)** to the **TRWS Stand (2)**.
- Secure the Mounting Bracket using **three M8 bolts**. Tighten with a 13 mm wrench.



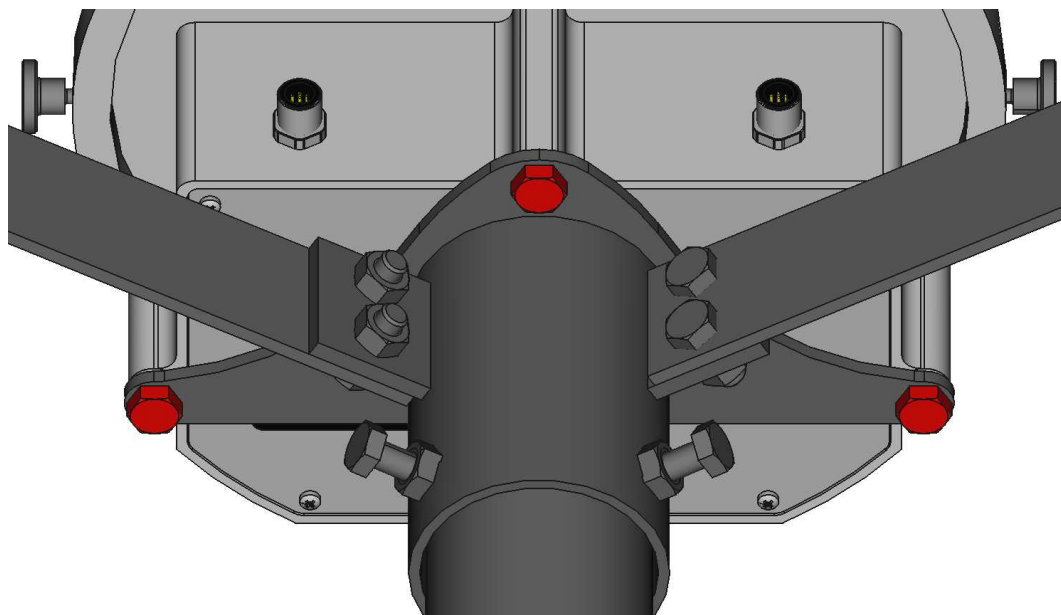
2. Attach Horizontal Arms

- Attach **3 pcs Horizontal Arms (3)** to the **Mounting Bracket (1)** using **6 pcs M8x20 bolts with washer & nut (9)** for each arm. Tighten with a 13 mm wrench.



3. Attach TRWS_E base

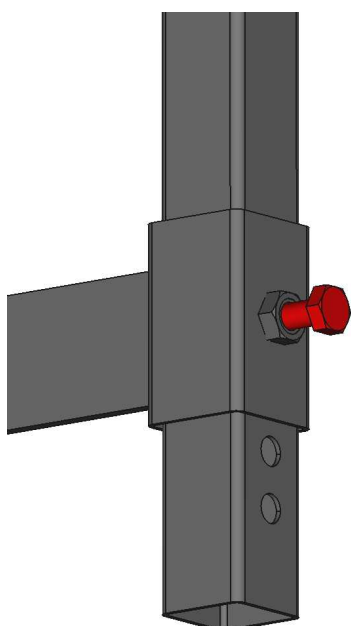
- Position the TRWS_E base on top, ensuring its threaded holes align with the holes in the flange and the Mounting Bracket.
- Secure the base plate using **three M8 bolts with washer** . Tighten with a 13 mm wrench.



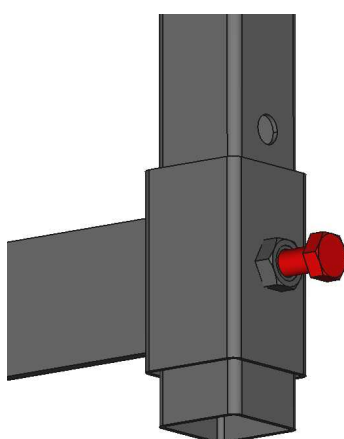
3. Attach Vertical Supports

- Attach **3 Vertical Supports** (4) to the ends of the Horizontal Arms (3).
- Use the holes that correspond to your specific TRWS model:

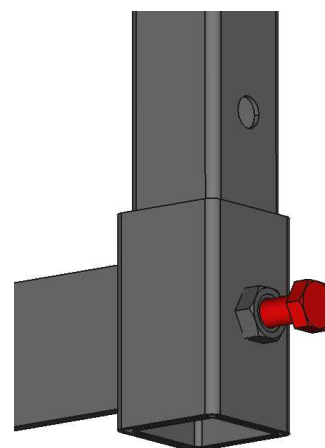
TRWS_E.200



TRWS_E.314



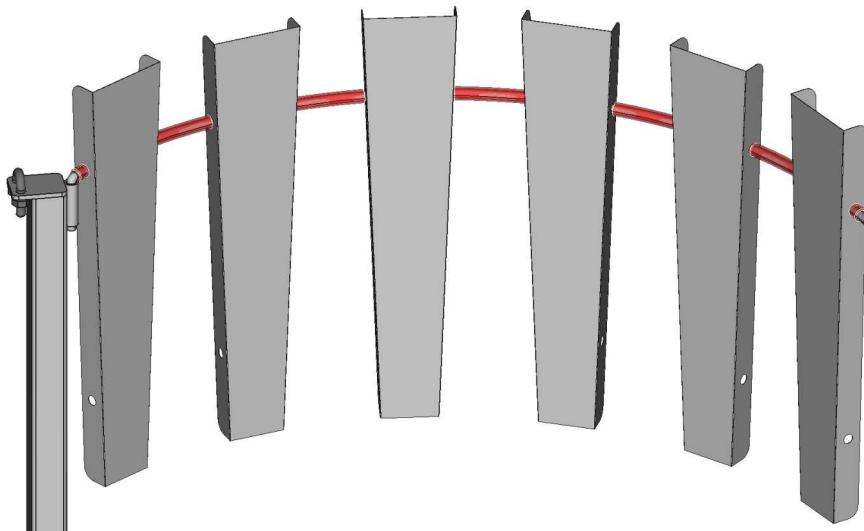
TRWS_E.400



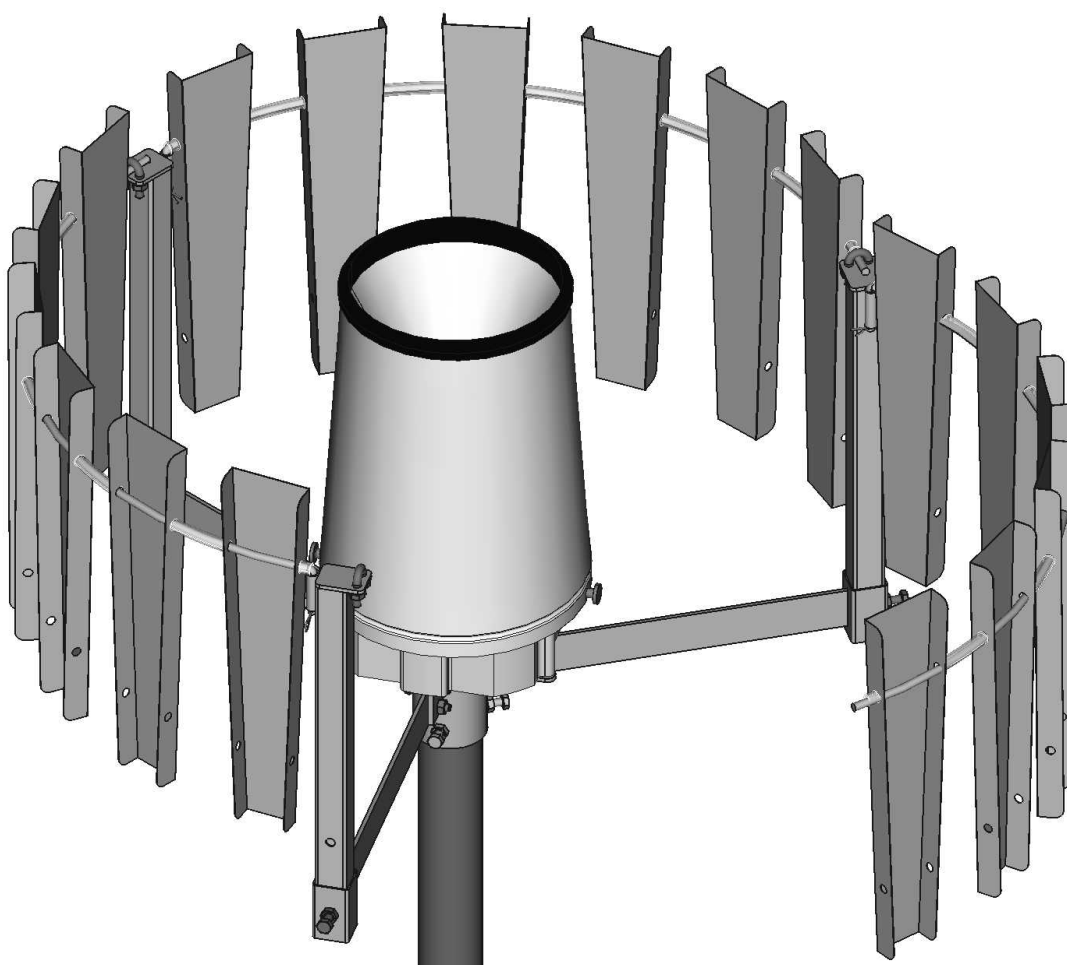
- Tighten with a 13 mm wrench.

4. Assemble the Ring Segments with Leaves and Spacers

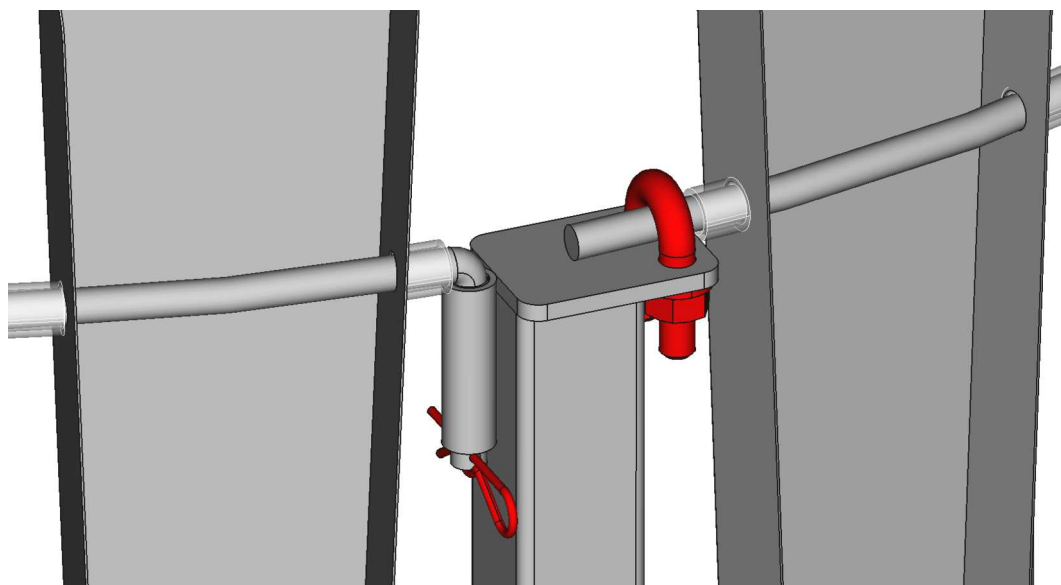
- Insert the **Ring segments** (6) into the hinges on the **Vertical support** (4)
- On each **Ring Segment**, alternately attach **Leaves** (5) and **Spacers** (7). Use the holes at the wider ends of the Leaves for attachment. Between **six leaves**, use **5 pcs of Long spacers** (7), and on both ends use **2 pcs Short spacers** (7) each.
- Ensure the flat sides of the Leaves face inward, towards the rain gauge.



5. Securing ring segments

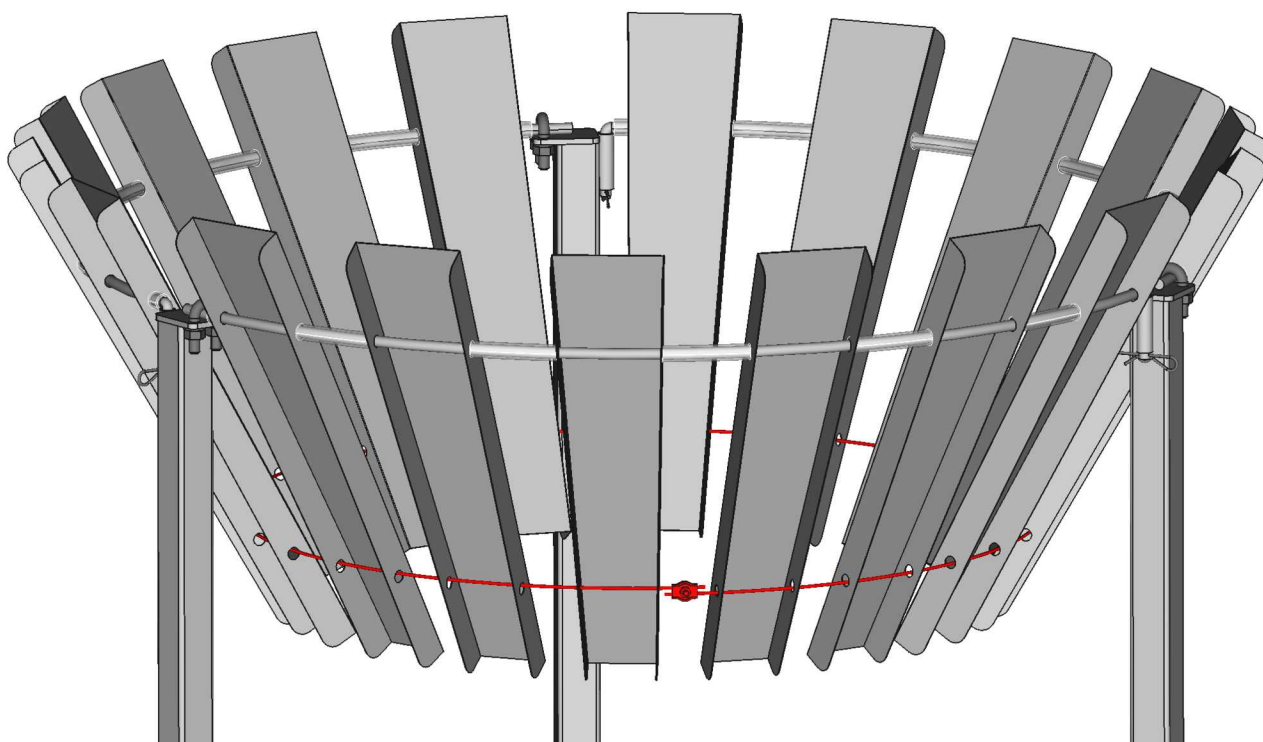


- By rotating the **Ring segment** at the hinge, insert the open end into the **U-clamp** on the other leg
- Tighten with a 13 mm wrench
- Secure with **R-clip** (6)

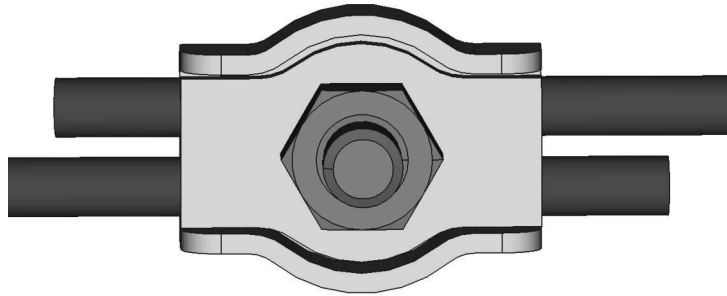


6. Install the Steel Cable

- Thread the **Steel Cable** (8) through the holes at the lower ends of each Leaf (5).



- Connect both ends of the cable using the provided clamp. Tighten with a 7 mm socket wrench.



Final Adjustments:

- Verify that all bolts are tightened and the structure is stable.
- Ensure the Leaves are evenly spaced and properly aligned for optimal wind shielding.
- **Make sure the stand is securely fastened and anchored to the ground to prevent the entire assembly from vibrating in the wind.**